

AWARE Today. ALIVE Tomorrow.

Vehicle Data Translator [VDT]

Using vehicles to diagnose the weather

Sheldon Drobot
drobot@ucar.edu

Michael Chapman, Elena Schuler, Brice Lambi,
Gerry Wiener, William Mahoney, NCAR
Paul A. Pisano, FHWA
Ben McKeever, RITA

All slides Copyright 2010 Sheldon Drobot/NCAR

Objective

- ❖ Outline NCAR research through the lens of a potential I-80 Coalition project





Mesa Lab



**Foothills Lab
Campus**



Aviation Facility



**Center Green
Campus**



Research Applications Laboratory

❖ RAL

- ❖ One of five laboratories of NCAR
- ❖ About 200 people, approximately half are atmospheric scientists, and half are software engineers

❖ Mission

- ❖ Transfer knowledge and technology to US government agencies, the private sector, and foreign governments

The promise of mobile observations

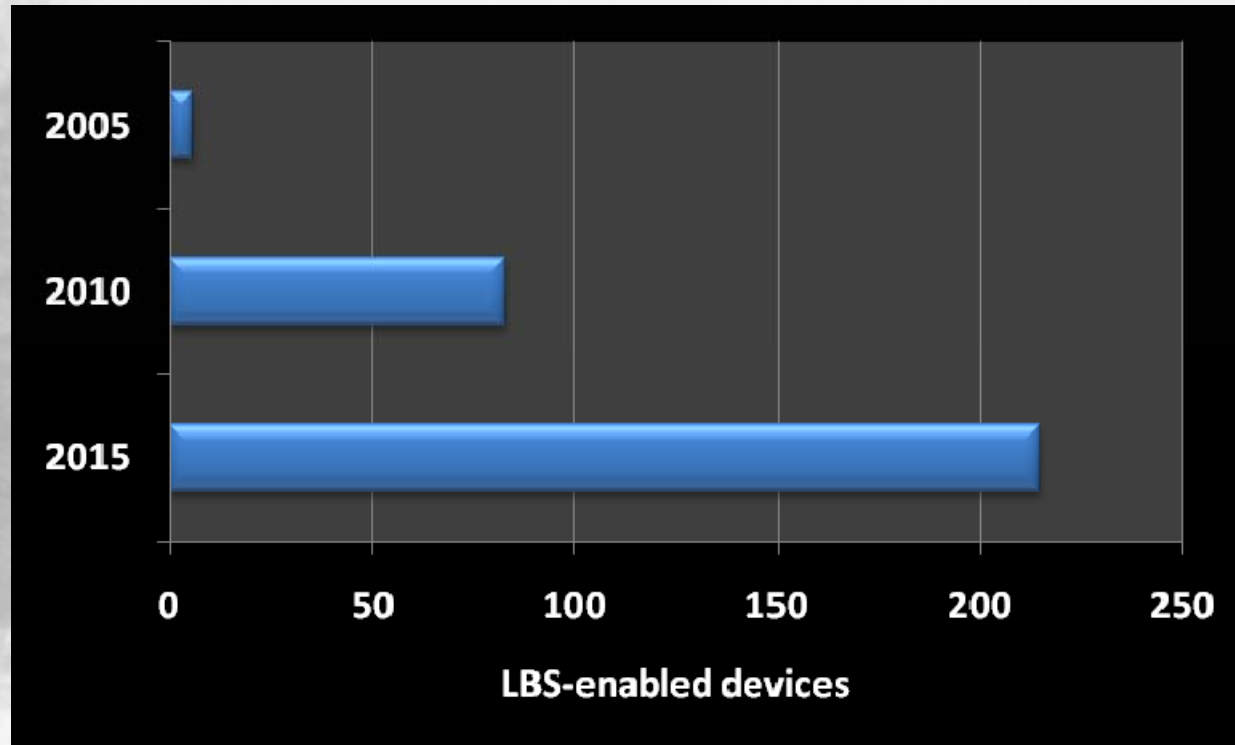
Technology

Consumer
Interest

DOT
IntelliDriveSM
Initiative

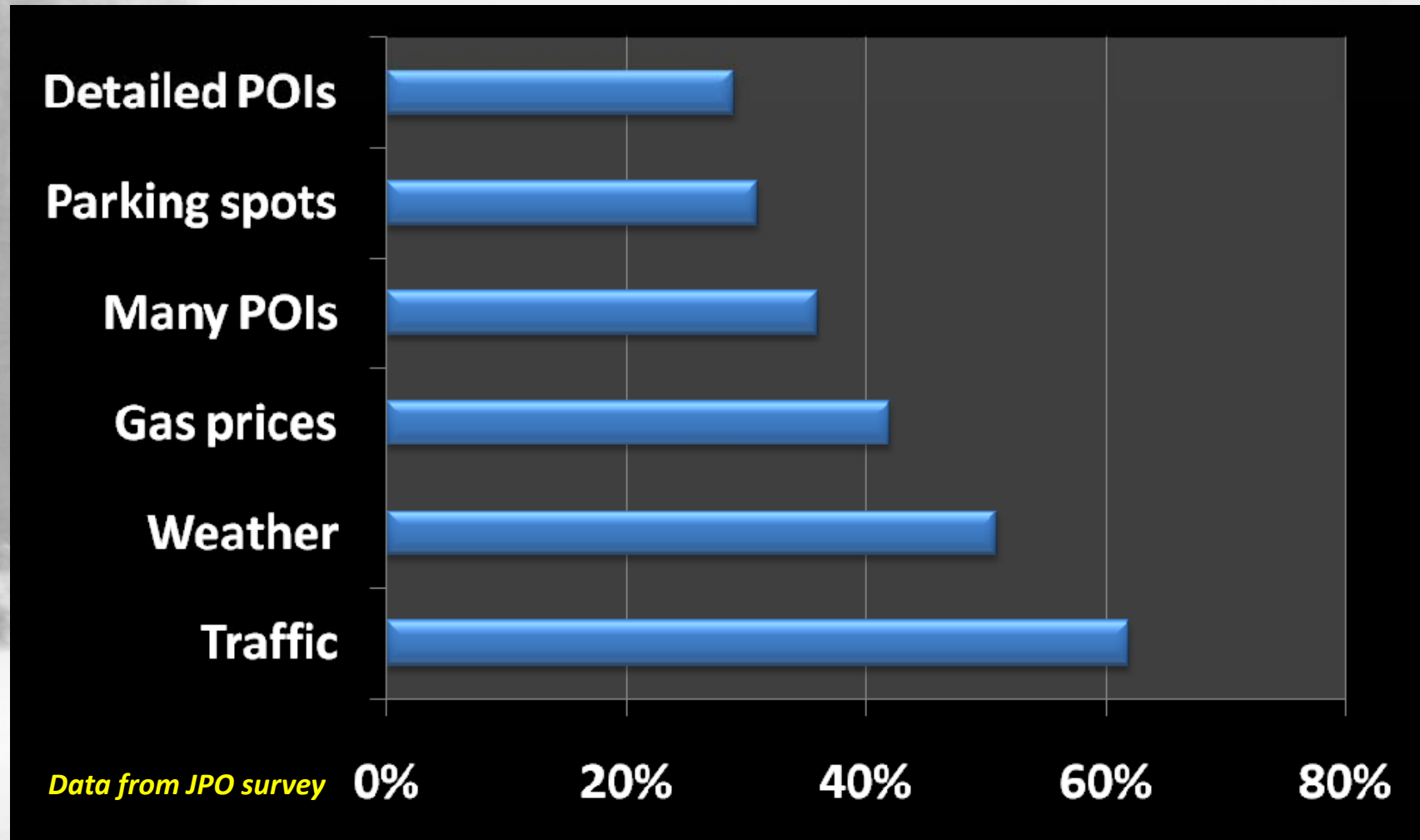
VDT

Transportation market trends



- ❖ **2016, connectivity will be a “critical buying consideration” on par with fuel efficiency, safety, etc.**
- ❖ **2020, 30-90 million connected vehicles.**

Consumer interest in transportation information



The IntelliDriveSM initiative

- ❖ IntelliDriveSM is a suite of technologies and applications that use wireless communications
- ❖ IntelliDriveSM applications provide connectivity:
 - ❖ with and among vehicles
 - ❖ between vehicles and the roadway infrastructure
 - ❖ among vehicles, infrastructure, and wireless devices (consumer electronics, such as cell phones and PDAs) that are carried by drivers, pedestrians, and bicyclists

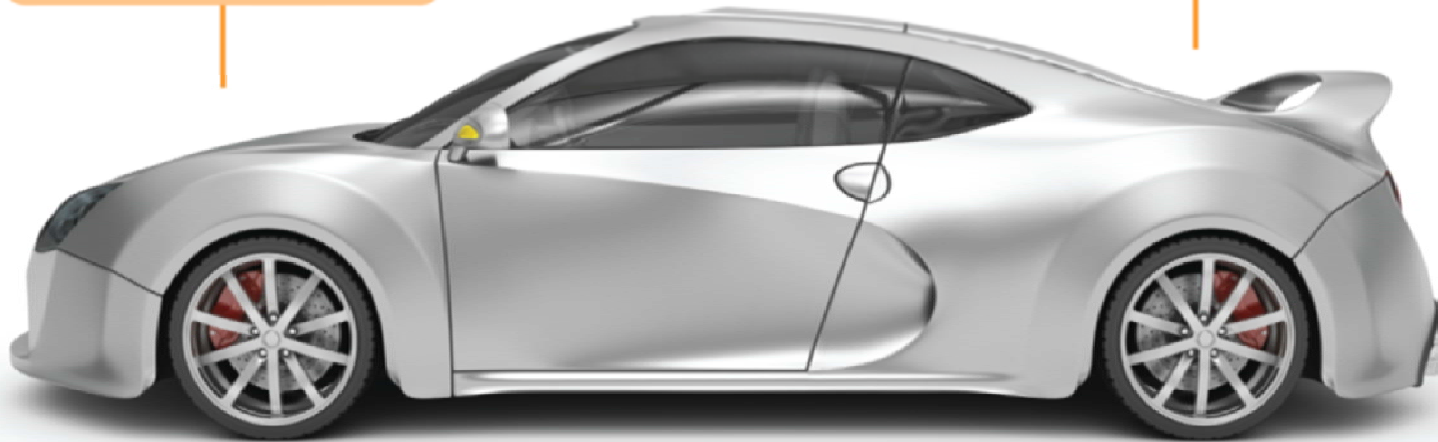


<http://www.intelldriveusa.org>

Vehicle data in IntelliDriveSM

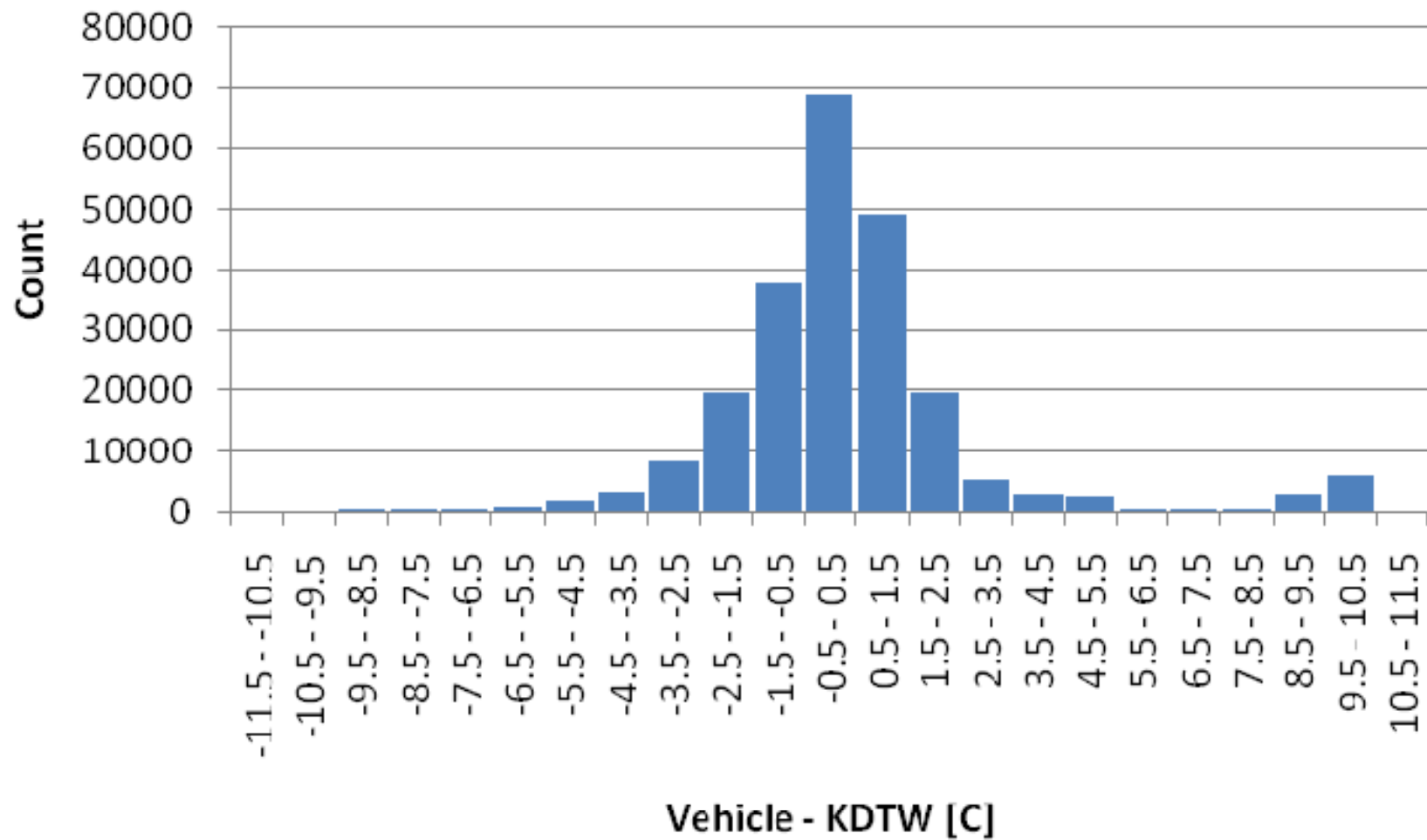
Sun/Rain Sensor
Windshield Wiper Setting
Head Lights Status
Ambient Air Temperature

Speed and Heading
Adaptive Cruise Control (ACC)
Location and Elevation
Hours of Operation

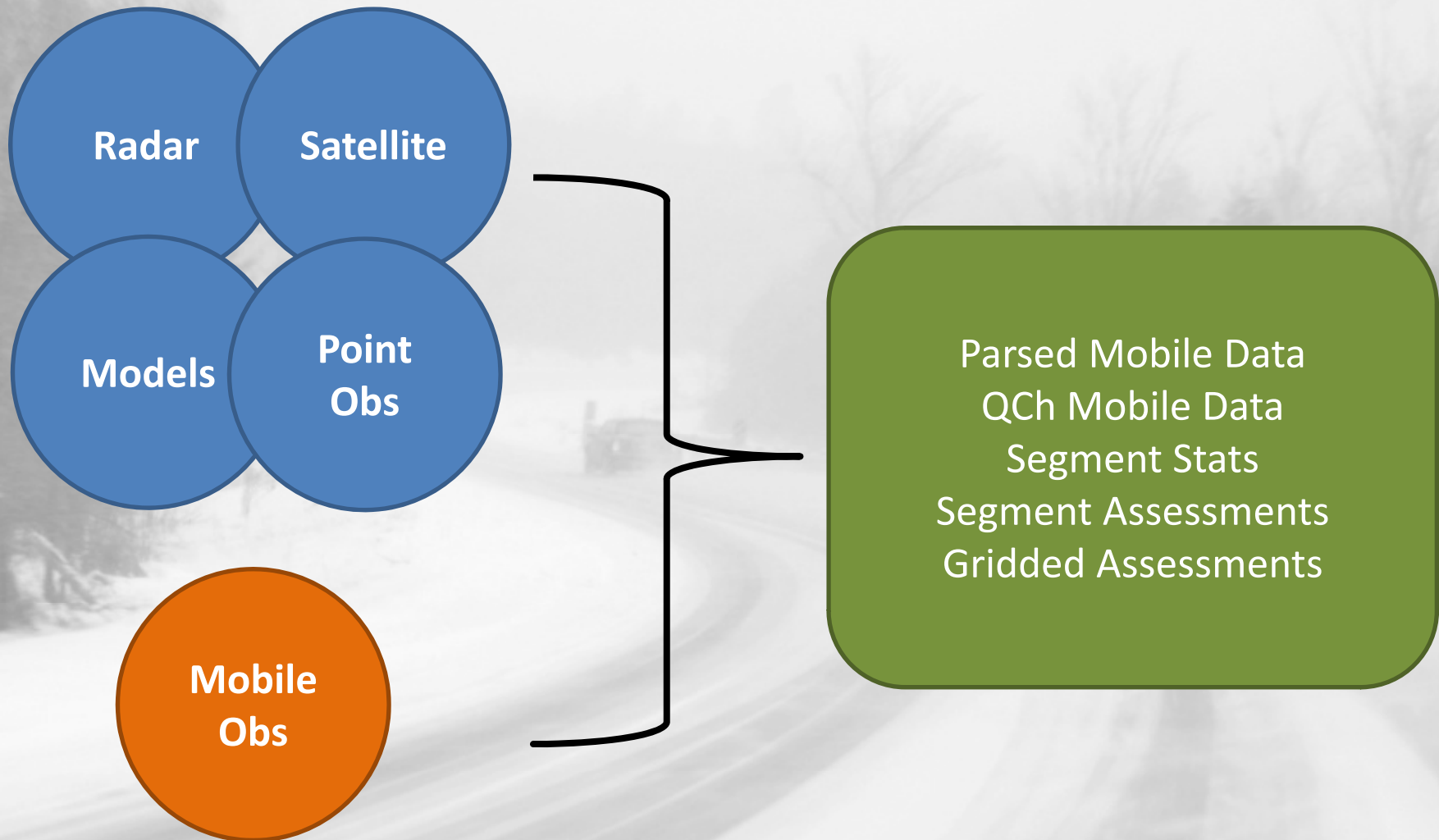


Antilock Braking System (ABS)
Brake Status
Stability Control
Traction Control

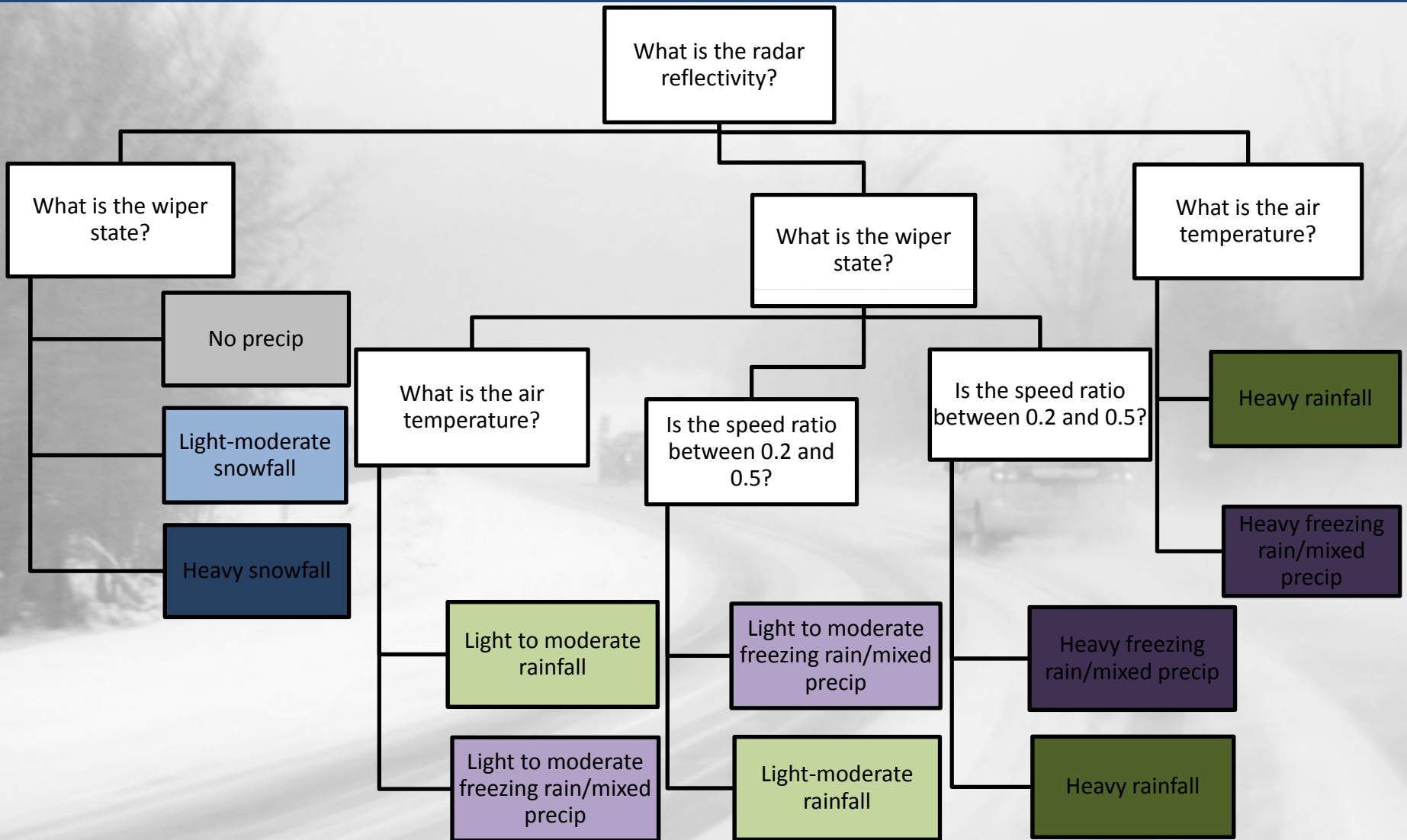
Temperature accuracy (DTE09)



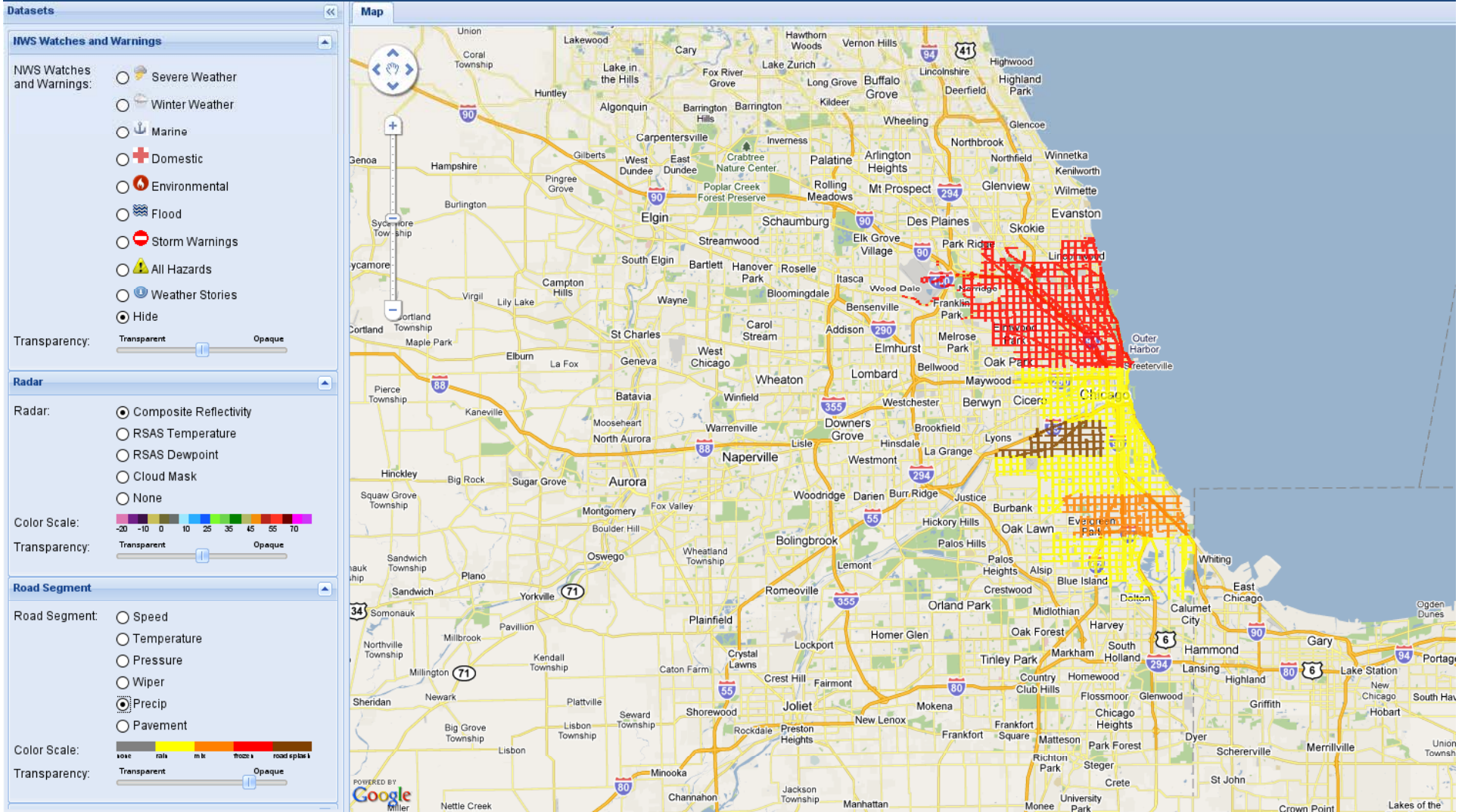
Vehicle Data Translator (VDT) Concept



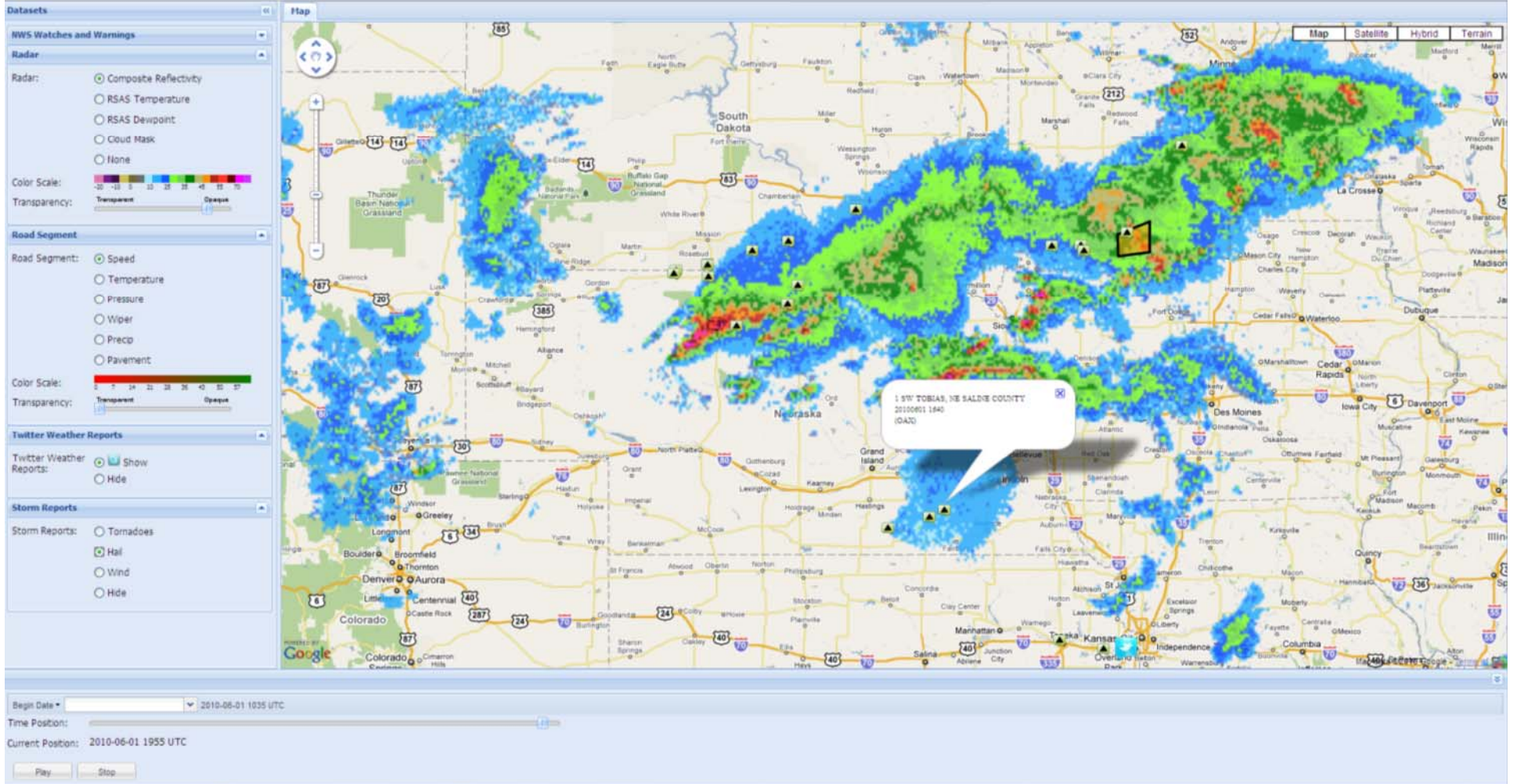
Mixed



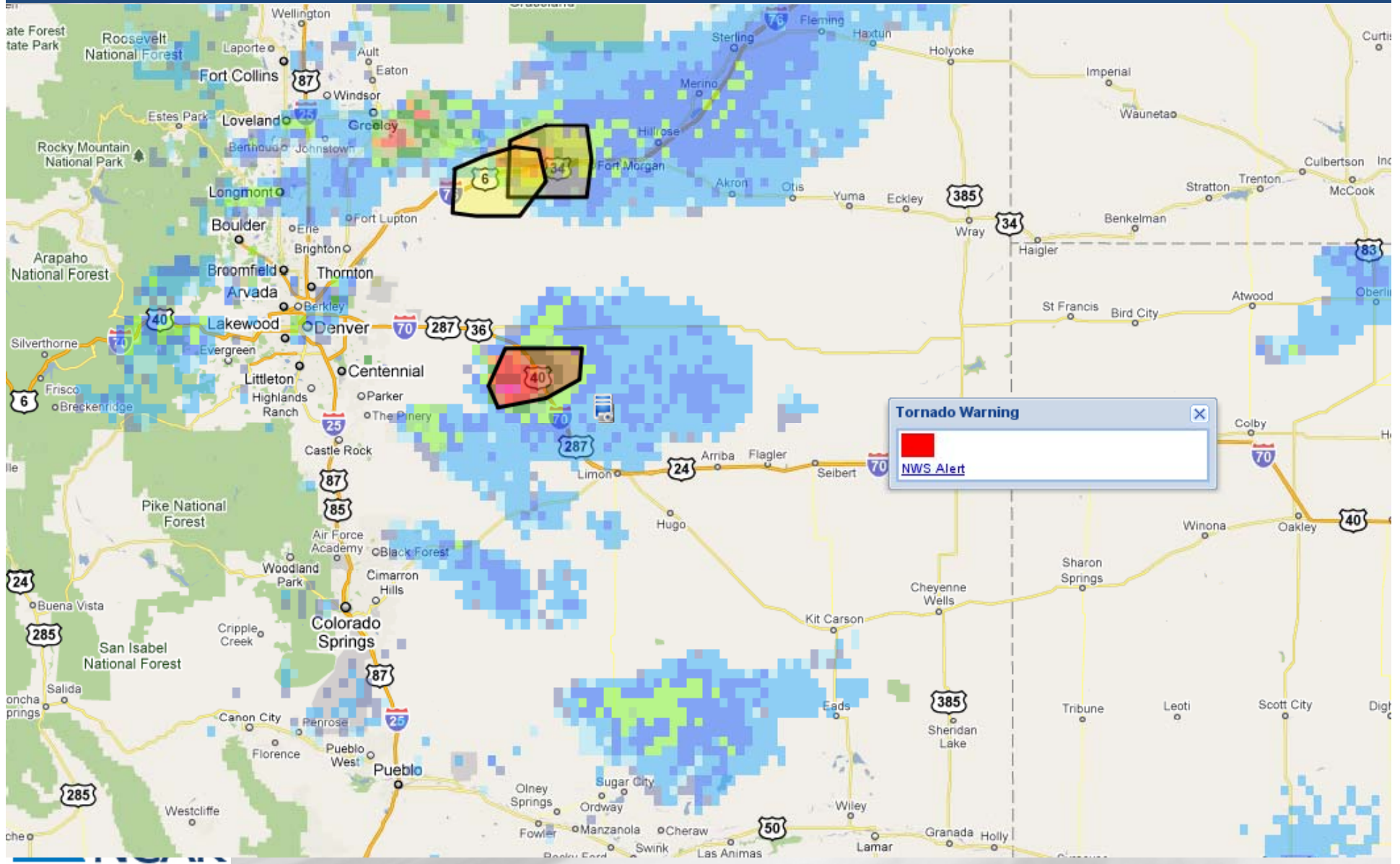
Display



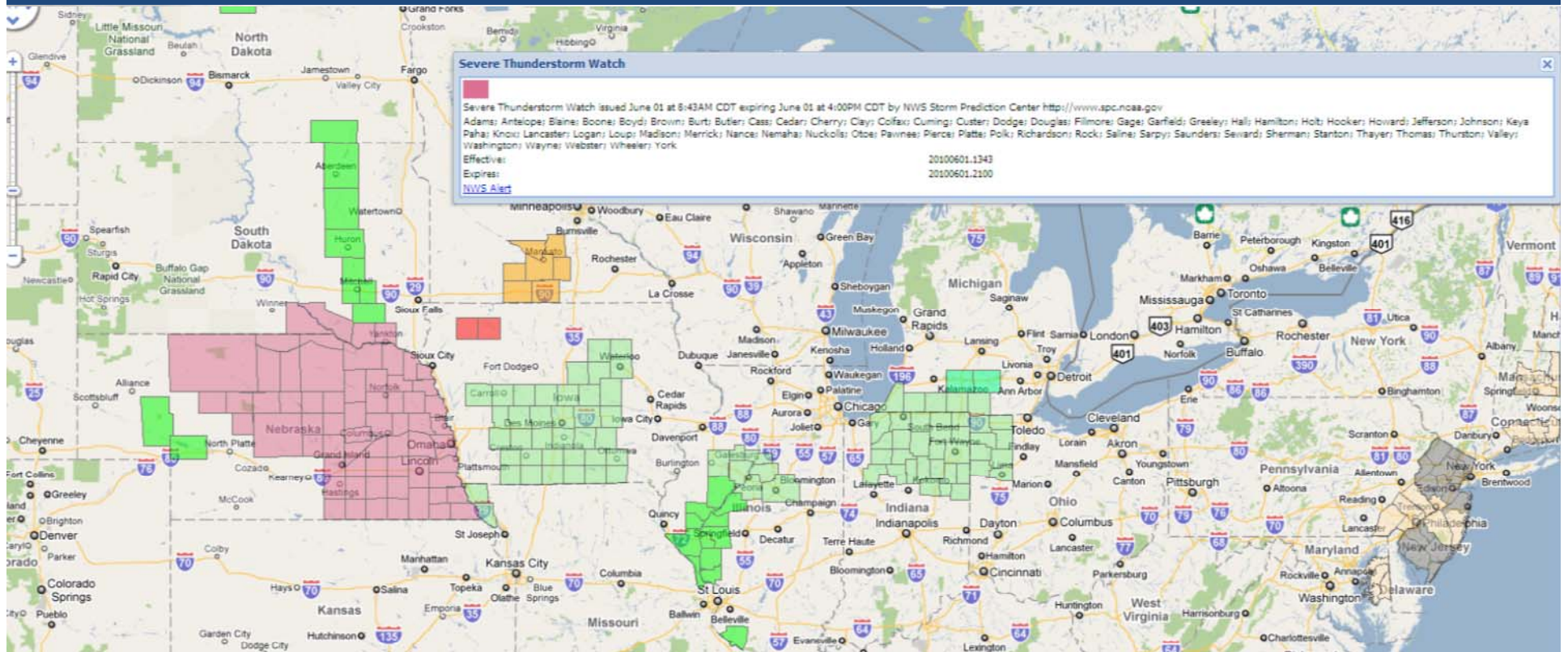
VDT display



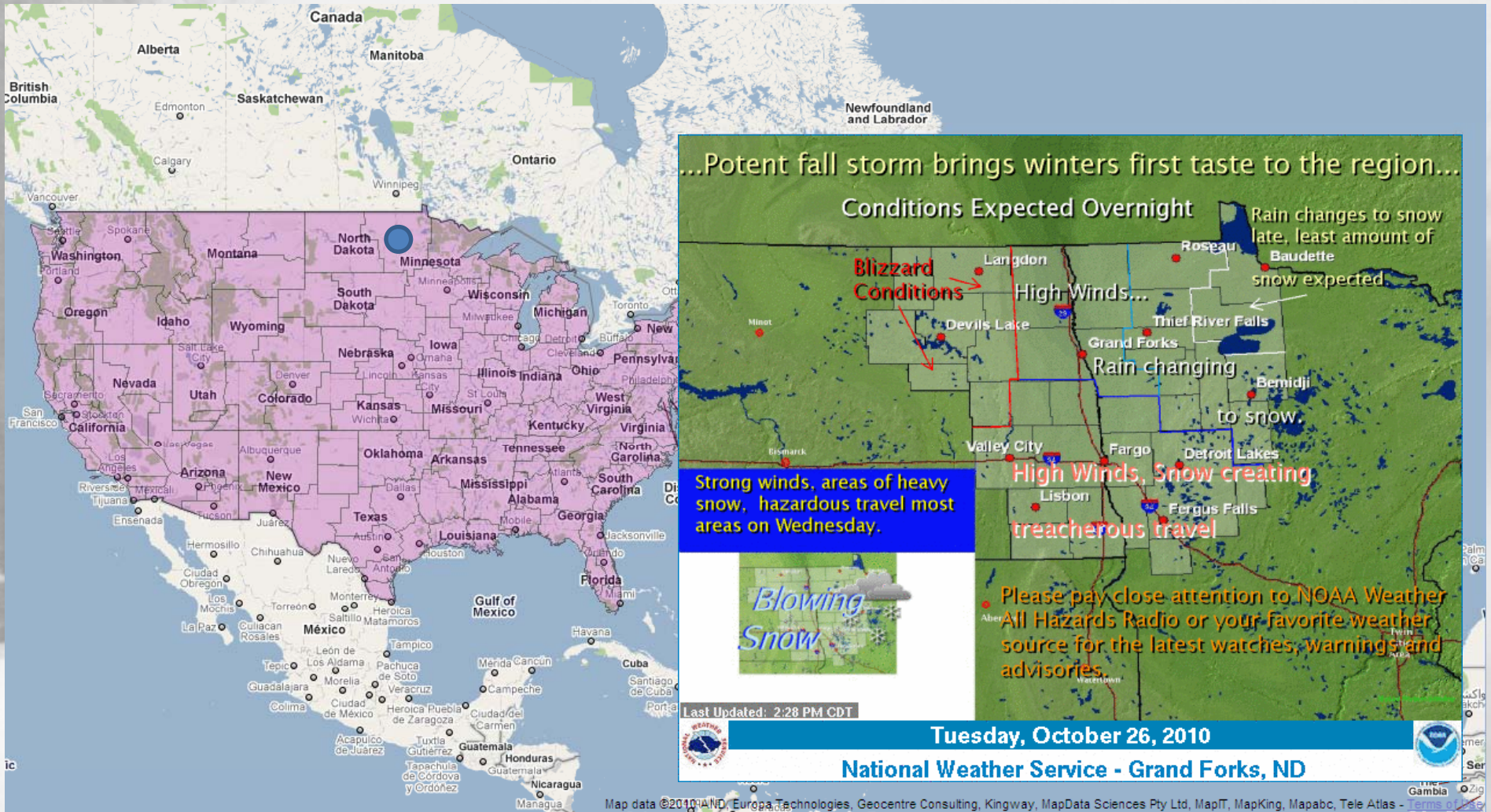
NWS Polygon Warnings



NWS watch / warning information

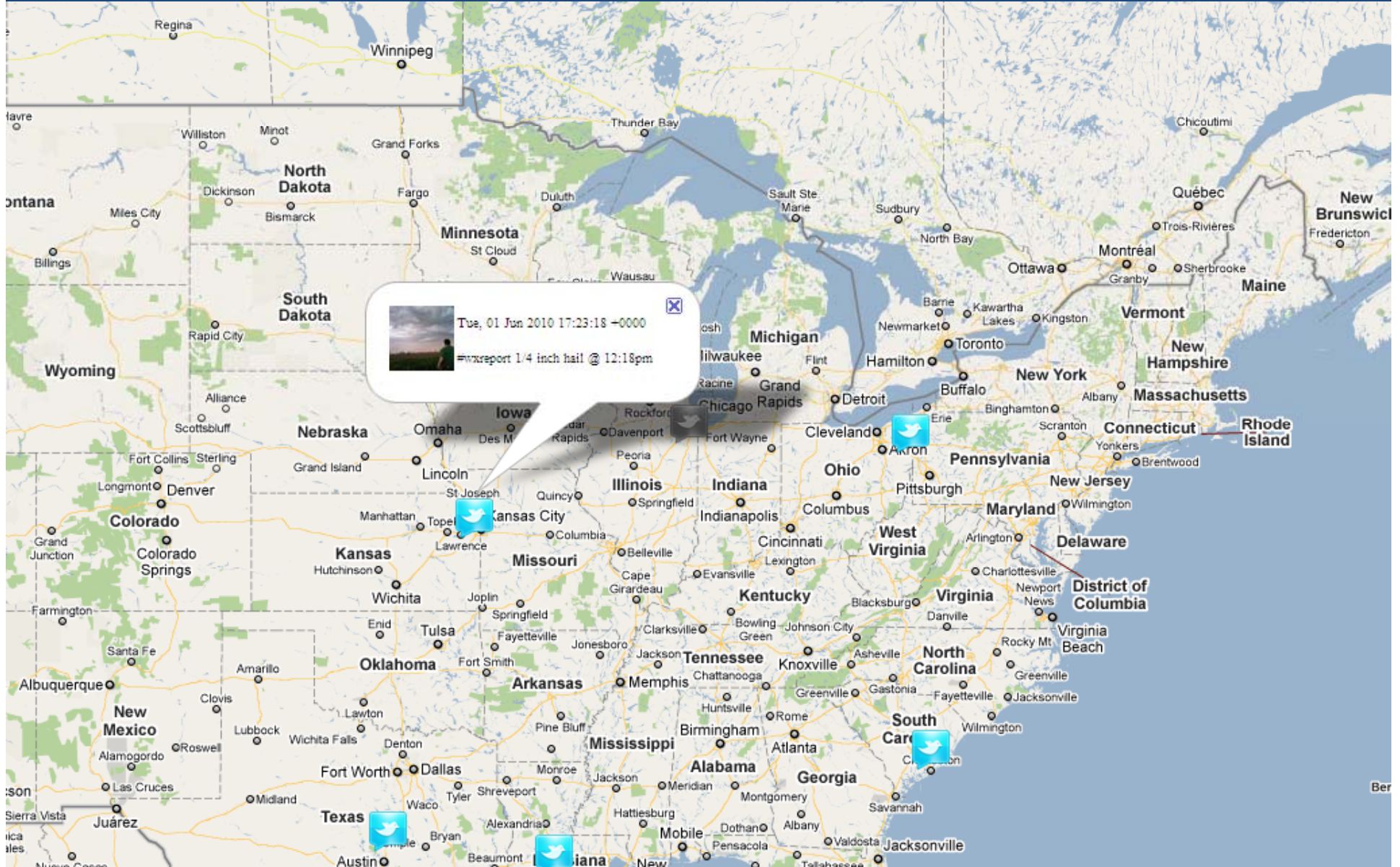


NWS Story of the Day



Map data © 2010 IANIGLA, Europa Technologies, Geocentre Consulting, Kingway, MapData Sciences Pty Ltd, MapIT, MapKing, Mapabc, Tele Atlas - Terms of Use

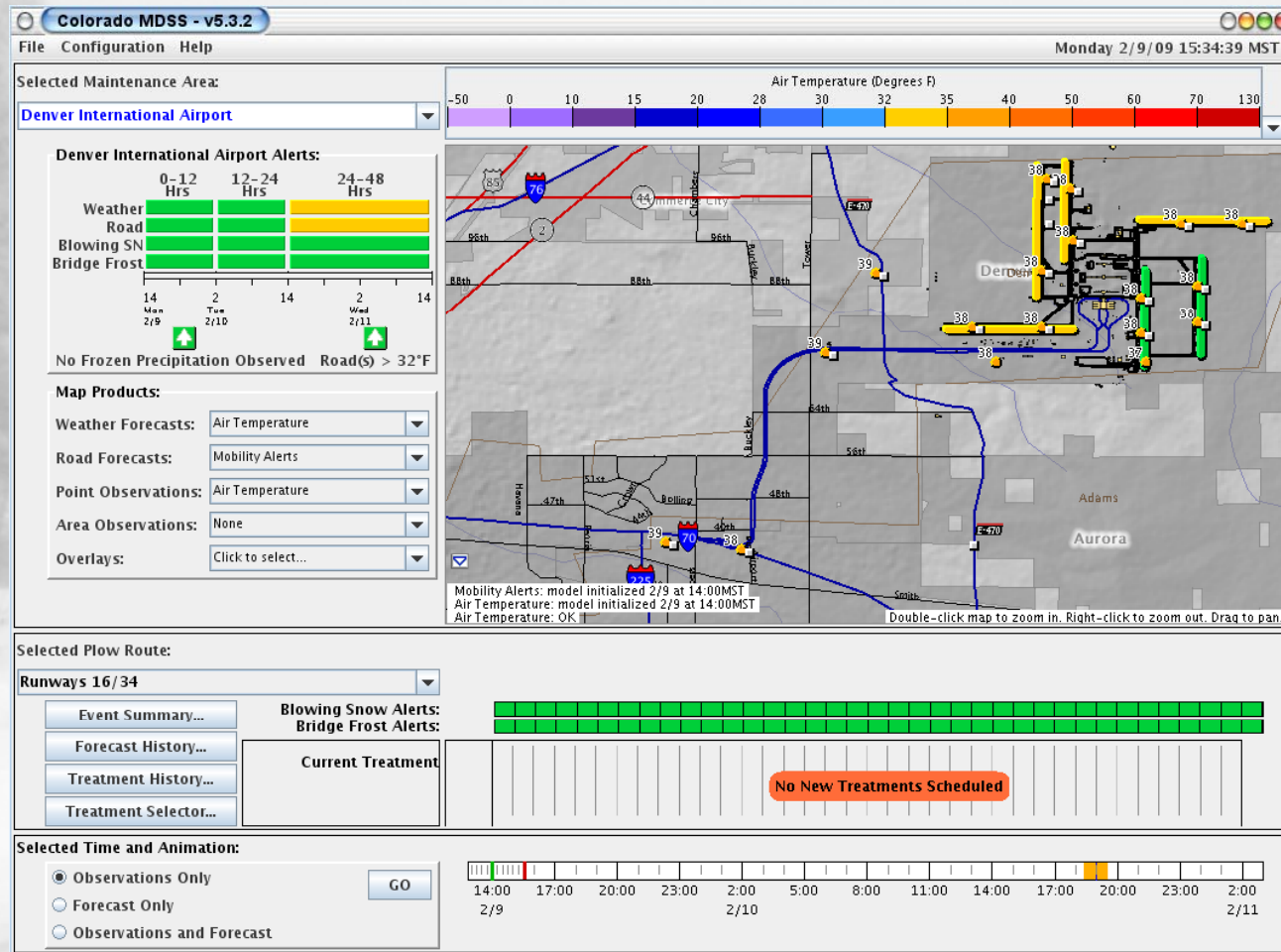
Twitter Feeds



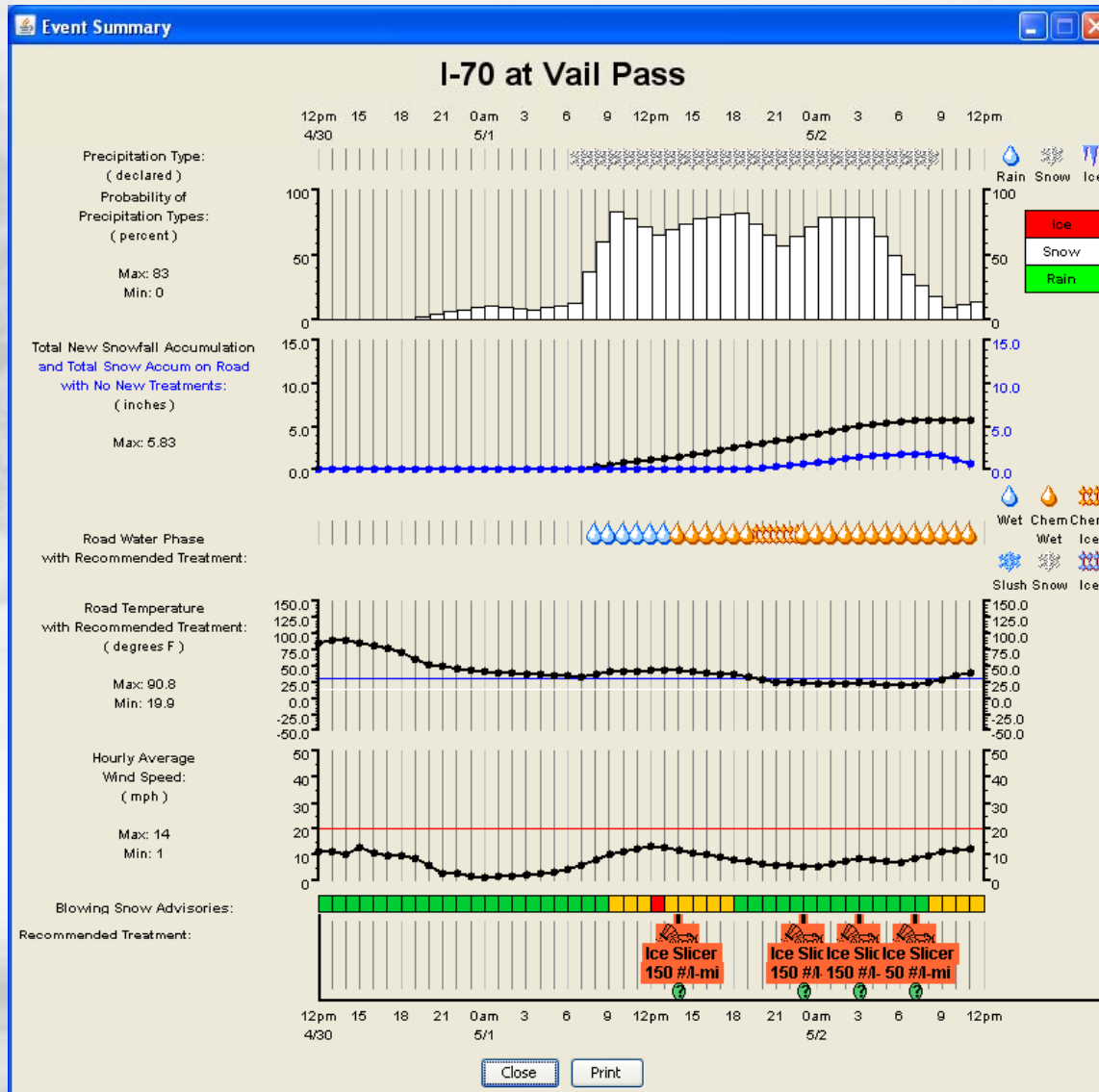
What else could we add?

- ❖ **Traffic information?**
- ❖ **CMS messages?**
- ❖ **Audio alerts?**
- ❖ **What do you want/need?**

What about forecasts?



Event Summaries



it's not the end, it's merely the beginning

*"Dream no small dreams for they have no
power to move the hearts of men."*

--Johann Wolfgang von Goethe

